



DominionSM

The New Reactor Next Door: Some Lessons and Observations

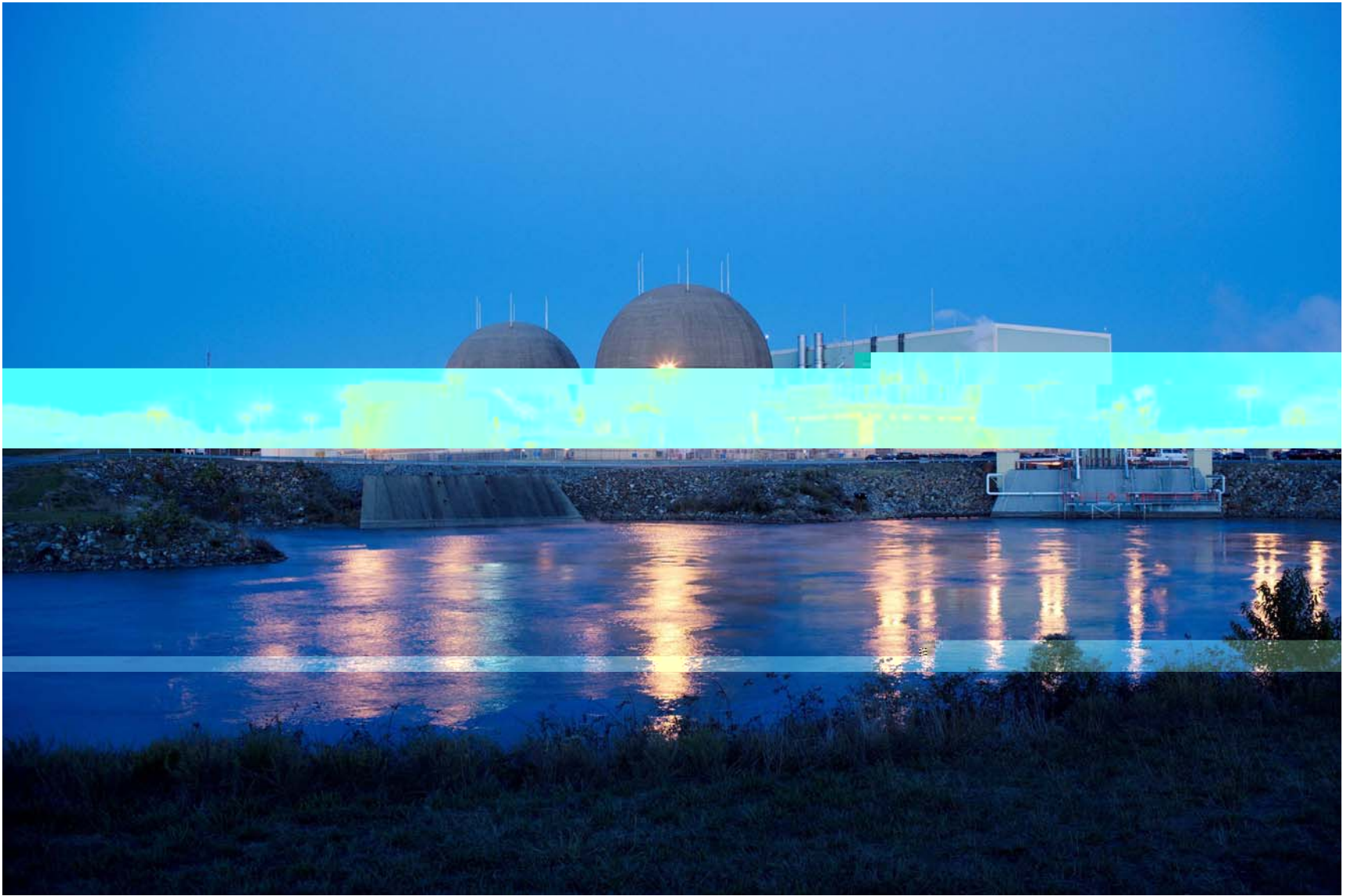
Dan Stoddard
Site Vice-President
North Anna Power Station

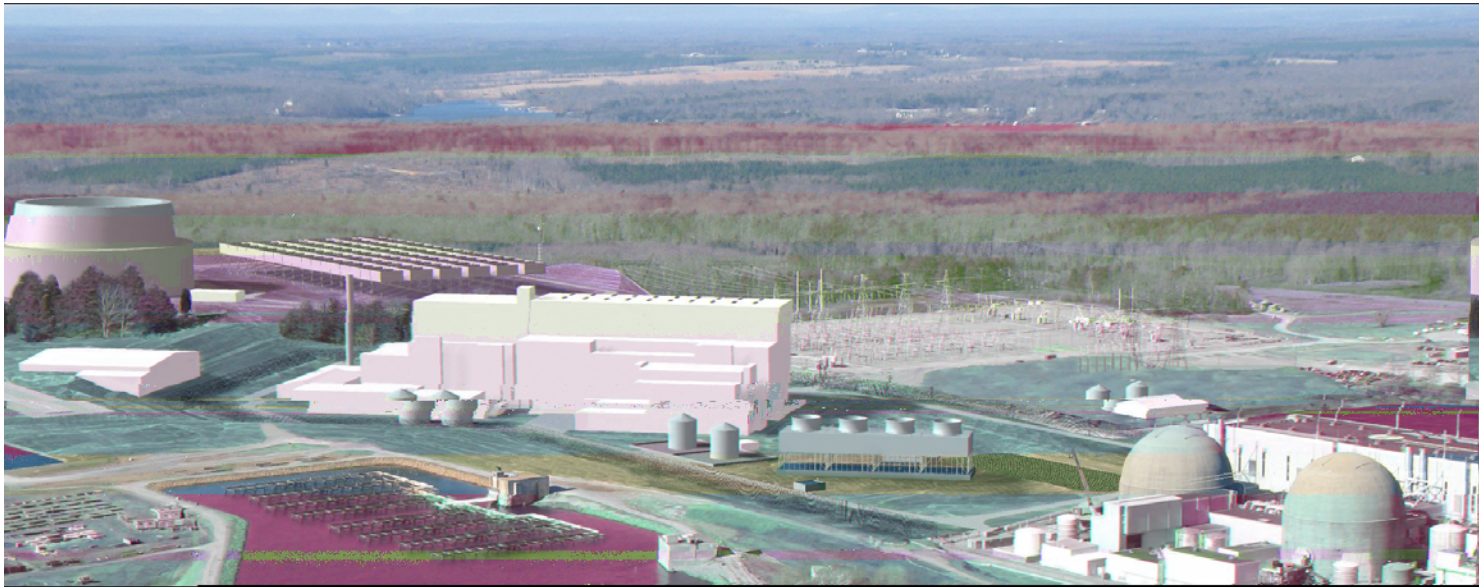
Dominion

“Nuclear Safety First”









North Anna Unit 3 - Timeline

2007 – Long lead time items orders

2007 – Early Site Permit receive

2007 – COL submitted

2008 – COL accepted by NRC

2008 – Begin site separation work

2011 – COL approved by NRC

2012 – (Potentially) begin construction

2016/17 – Unit 3 achieves commercial operation



Top Ten Ways You Know Someone Wants to Build a New Reactor Next Door

10. People start showing up at your plant with drill rigs saying “don’t worry, we’re just core boring for the new unit.”
9. Some of the same people come to you later offering to build you new buildings. (Why do I need new buildings?)
8. You start getting so many visitors you consider renaming your visitors center “Nuclear Disney World.”
7. Many of those visitors begin to have titles like “Commissioner” and “General.”
6. You see yourself quoted in a Washington Post article that is actually positive.

Top Ten Ways You Know Someone Want to Build a New Reactor Next Door

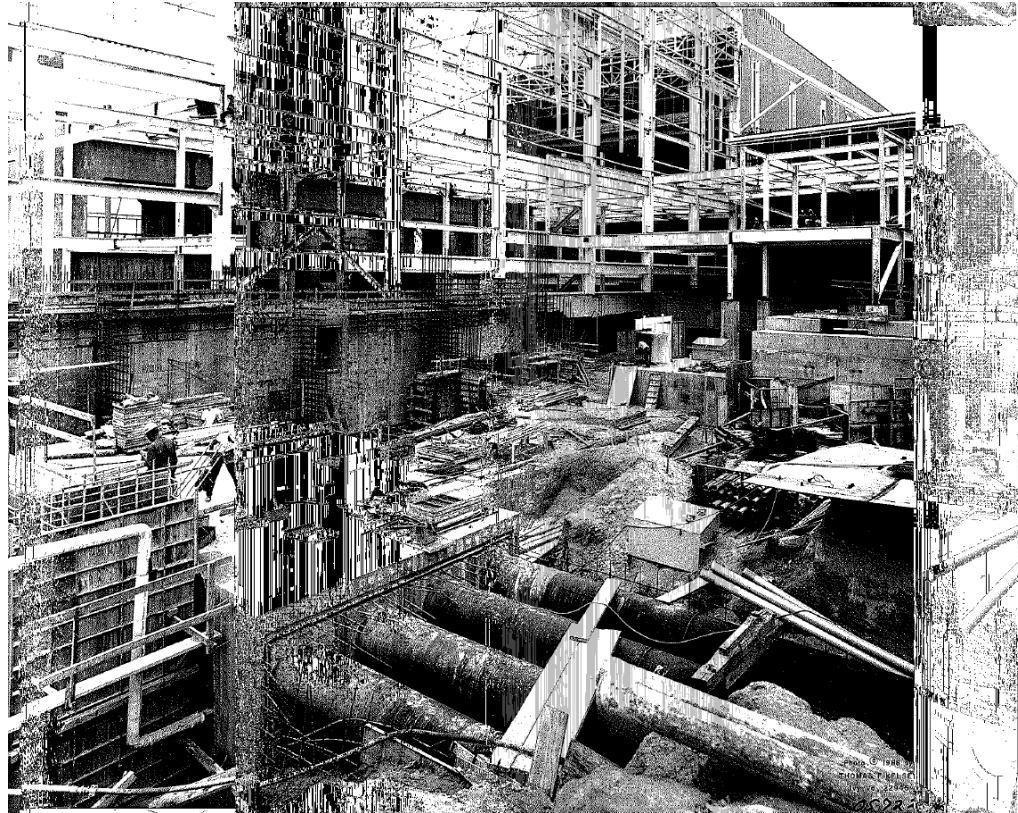
5. You have people declaring themselves as “Friends” of *your* lake, but who don’t seem to believe you should get to use it.
4. A “brain eating amoeba” is not something you just read about in a Stephen King book.
3. You have prospective new employees who say the plant is “really great, but when can I work at the *new* reactor?”
2. You come to a public meeting and find the parking lot filled with hybrid vehicles and speakers announcing that they are from Albemarle County.
1. You find yourself giving a talk to a room full of very bright people on a topic about which you are still learning yourself - one day at a time.

Challenges of the New Reactor

- Physical
- Political
- People

Physical

- Drilling
- Digging
- Power
- Piping
- Buildings
- Roads



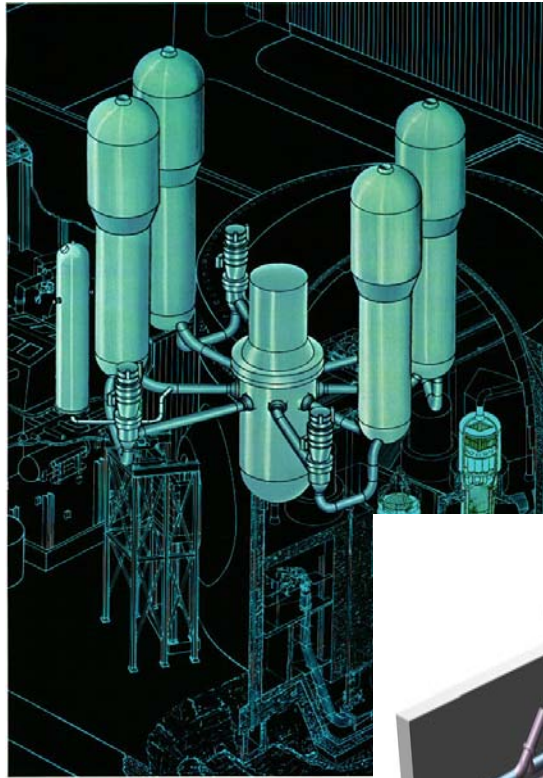
Political

- Tours
- Visitors
- Media
- Meetings
- Stakeholders

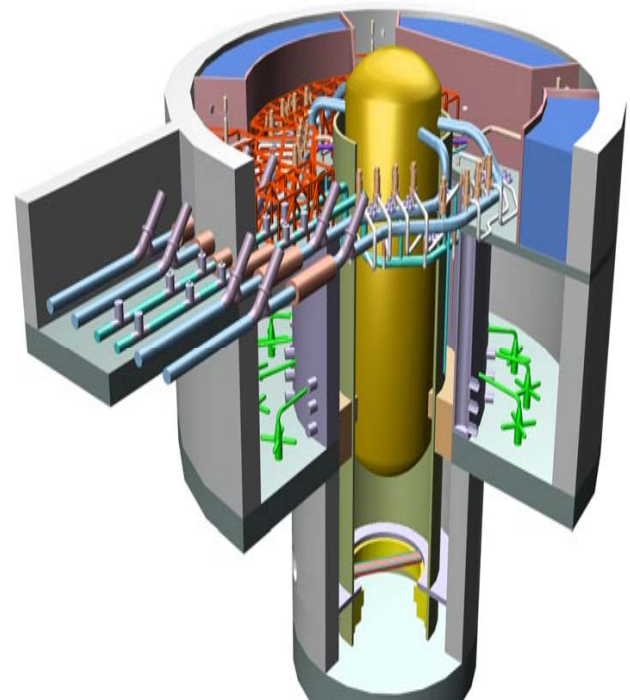


People

- Recruiting
- Retention
- Availability
- Knowledge and Skills



Westinghouse NUCLEAR STEAM SUPPLY SYSTEM



Making the Dream a Reality



- Commercial
- Regulatory
- The Bottom Line:

